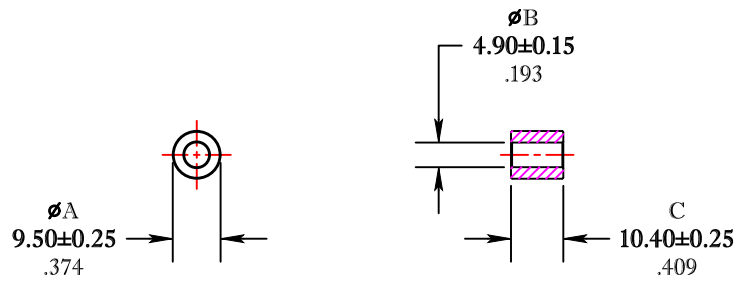


\*\* Not all features are shown in this drawing. For more detailed information, please contact your Fair-Rite representative.

UNCONTROLLED ~CATALOG~ DRAWING

SIZE	PART NO.	REV.
B	2643006302	~




DIMENSIONS  
**BOLD NUMBERS ARE IN MILLIMETERS**  
 LIGHT NUMBERS ARE IN INCHES

ELECTRICAL SPECIFICATIONS						
$\Sigma l/A(\text{mm}^{-1})$	$l_e$ (mm)	$A_e$ (mm <sup>2</sup> )	$V_e$ (mm <sup>3</sup> )	$L_o$ (nH)	IMPEDANCE (OHMS)	
					25 MHz	100 MHz
0.91251	21.1	23.1	485	1.377	40 Min.	60 Min.
N=1 #22AWG WL=1.50"						

NOTES:

- 1 - BURNISH TO BREAK SHARP EDGES.
- 2 - IMPEDANCE MEASURED ON AN E4991A USING A 16092A TEST FIXTURE.

FR# 43

 <b>FAIR-RITE PRODUCTS CORP.</b>						
TITLE SHIELD BEAD						
DRAWN BY J.SERENCSCS	DATE 06-27-2018	SIZE B	PART NO. 2643006302	REV. ~		
CHKD BY						
APPRVD BY		SCALE NONE	SHEET 1 of 1			