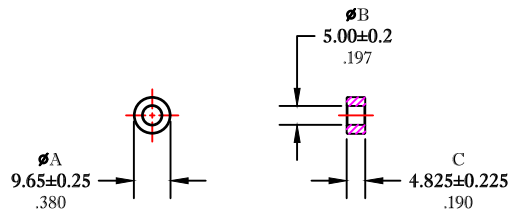


\*\* Not all features are shown in this drawing. For more detailed information, please contact your Fair-Rite representative.

UNCONTROLLED ~CATALOG~ DRAWING

SIZE	PART NO.	REV.
B	2643002402	~



DIMENSIONS  
**BOLD NUMBERS ARE IN MILLIMETERS**  
 LIGHT NUMBERS ARE IN INCHES

ELECTRICAL SPECIFICATIONS						
$\Sigma L/A(\text{mm}^{-1})$	$l_e$ (mm)	$A_c$ (mm <sup>2</sup> )	$V_e$ (mm <sup>3</sup> )	$L_o$ (nH)	IMPEDANCE (OHMS)	
					25 MHz	100 MHz
1.9804	21.4	10.8	232	0.635	20 Min.	30 Min.
N=1 #22AWG WL=1"						

NOTES:

- 1 - BURNISH TO BREAK SHARP EDGES.
- 2 - IMPEDANCE IS MEASURED ON AN E4991A USING A 16092A TEST FIXTURE.

FR# 43

<b>FAIR-RITE PRODUCTS CORP.</b>						
TITLE						
SHIELD BEAD						
DRAWN BY	DATE	SIZE	PART NO.	REV.		
J.SERENCOS	06-27-2018	B	2643002402	~		
CHKD BY						
APPRD BY		SCALE	NONE	SHEET	1 of 1	