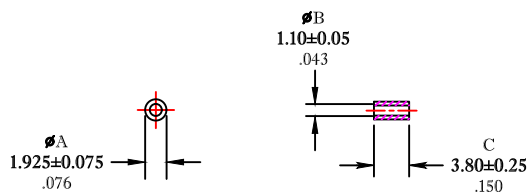


** Not all features are shown in this drawing. For more detailed information, please contact your Fair-Rite representative.

UNCONTROLLED ~CATALOG~ DRAWING

SIZE	PART NO.	REV.
B	2643000201	~



DIMENSIONS
BOLD NUMBERS ARE IN MILLIMETERS
 LIGHT NUMBERS ARE IN INCHES

ELECTRICAL SPECIFICATIONS

$\Sigma L/A(\text{mm}^{-1})$	l_e (mm)	A_e (mm ²)	V_e (mm ³)	L_e (nH)	IMPEDANCE (OHMS)		AL (nH) @10 kHz <10gauss
					25 MHz	100 MHz	
2.9545	4.51	1.53	6.9	0.425	13 Min.	22 Min.	170 - 510
N=1 #22AWG WL=1"							N=3

NOTES:

- 1 - CHIPS, CRACKS, AND APPEARANCE TO MEET FAIR-RITE VISUAL INSPECTION CRITERIA FOR GENERIC SHIELD BEADS.
- 2 - IMPEDANCE IS MEASURED ON AN E4991A USING A 16092A TEST FIXTURE.

FR# 43

FAIR-RITE PRODUCTS CORP.							
TITLE SHIELD BEAD							
DRAWN BY J.SERENCSKOS	DATE 06-27-2018	SIZE	PART NO.	REV.			
CHKD BY		B	2643000201	~			
APPROVD BY		SCALE	NONE	SHEET	1	of	1