

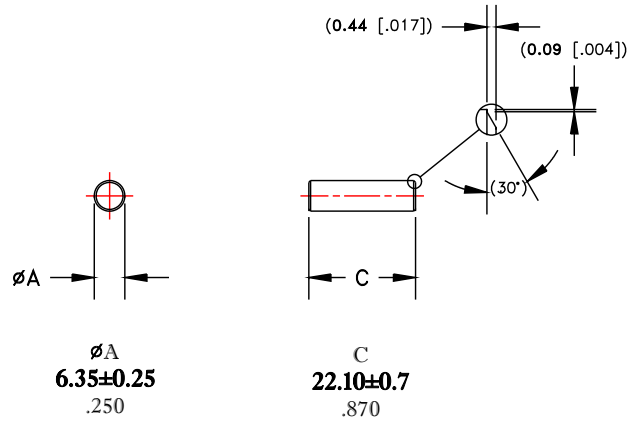
\*\* Not all features are shown in this drawing. For more detailed information, please contact your Fair-Rite representative.

UNCONTROLLED ~CATALOG~ DRAWING

|      |            |      |
|------|------------|------|
| SIZE | PART NO.   | REV. |
| B    | 4061287011 | ~    |


CHAMFER DETAIL

ALL AROUND DIAMETER EACH END OF CORE



| ELECTRICAL SPECIFICATIONS       |                           |
|---------------------------------|---------------------------|
| $L_s$ (mH)<br>@ 1 MHz<br>100 mV | Q<br>@ 10 MHz<br>100 mV   |
| 132±10%                         | 120 Min.                  |
| TEST COIL<br>N=76 #32 AWG       | TEST COIL<br>N=10 #22 AWG |

DIMENSIONS  
**BOLD NUMBERS ARE IN MILLIMETERS**  
 LIGHT NUMBERS ARE IN INCHES

|   |                    |       |            |              |
|---|--------------------|-------|------------|--------------|
|  <b>FAIR-RITE PRODUCTS CORP.</b> |                    |       |            |              |
| TITLE   |                    |       |            |              |
| SOLID ROD   |                    |       |            |              |
| DRAWN BY<br>D. FOOTE  | DATE<br>04/23/2021 | SIZE  | PART NO.   | REV.         |
| CHKD BY   |                    | B     | 4061287011 | ~            |
| APPRVD BY   |                    | SCALE | NONE       | SHEET 1 of 1 |

FR# 61