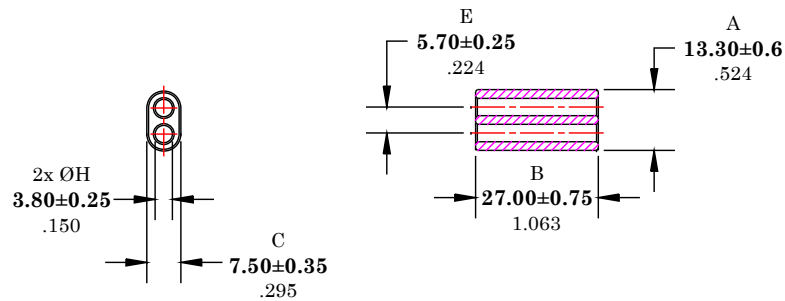


** Not all features are shown in this drawing. For more detailed information, please contact your Fair-Rite representative.

UNCONTROLLED ~CATALOG~ DRAWING

SIZE	PART NO.	REV.
B	2843006802	~



DIMENSIONS
BOLD NUMBERS ARE IN MILLIMETERS
 LIGHT NUMBERS ARE IN INCHES

ELECTRICAL SPECIFICATIONS

Impedance (Ohms)
100 MHz
240 Min.

N=1T-2H, #22 AWG, WL=3"

NOTES:

- 1 - BURNISH TO BREAK SHARP EDGES.
- 2 - IMPEDANCE IS MEASURED ON AN HP4193A, USING A 04193-87001 PROBE KIT. IMPEDANCE MAY ALSO BE MEASURED ON AN E4991A OR EQUIVALENT USING A 16092A TEST FIXTURE.

FAIR-RITE PRODUCTS CORP.				
TITLE MULTI-APERTURE CORE				
DRAWN BY D. FOOTE	DATE 8/7/2020	SIZE B	PART NO. 2843006802	REV. ~
CHKD BY				
APPRVD BY		SCALE NONE	SHEET 1 of 1	

FR# 43