

TITLE: PC BEADS

EFFECTIVE: 2-1-1998 Rev. 0

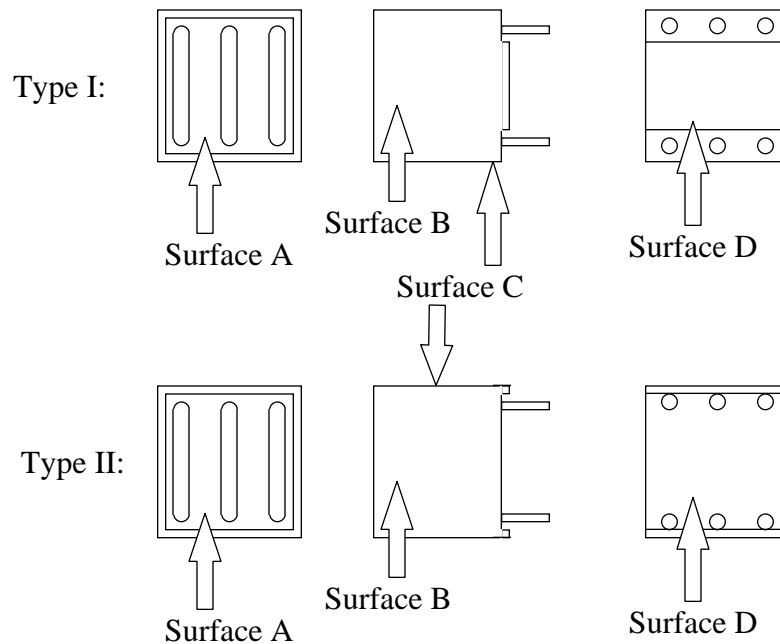
DEVELOPED BY: FRANKLIN DEMUTH

SUPERSEDES: NONE

UPDATE RESPONSIBILITY: QUALITY ASSURANCE TECHNICIAN

APPROVAL:

0.0 PC Bead - Generic



1.0 Chips:

- 1.1 Chips on Surface B which are longer than $1/8$ of the height (C dimension) of the part, or are wider than $1/8$ of the length (A dimension) of the part, are unacceptable.
- 1.2 Chips on Surface C which are longer than $1/8$ of the height (C dimension) of the part, or are wider than $1/8$ of the width (B dimension) of the part, are unacceptable.
- 1.3 Chips on Surface D which are longer than $1/8$ of the length (A dimension) of the part, or are wider than $1/4$ of the width (B dimension) of the part, are unacceptable.
- 1.4 Parts with more than two chips are unacceptable.

2.0 Cracks:

- 2.1 Cracks are unacceptable.
- 2.2 Cracking which does not affect the mechanical or electrical integrity of the part is acceptable.

3.0 Ragged Edges:

TITLE: PC BEADS	EFFECTIVE: 2-1-1998 Rev. 0
DEVELOPED BY: FRANKLIN DEMUTH	SUPERSEDES: NONE
UPDATE RESPONSIBILITY: QUALITY ASSURANCE TECHNICIAN	APPROVAL:

3.1 Ragged edges on the lip surrounding Surface A which are longer than 1/4 of the length of the part or which penetrate the entire thickness of the lip are unacceptable.

3.2 Ragged edges on the legs on Surface D of Type II parts which are longer than 1/8 of the length of the part or which penetrate the entire thickness of the leg are unacceptable.

4.0 Stains and Discolourations:

4.1 Stains and discolourations which do not affect the performance of the part are acceptable.

5.0 Wire:

5.1 Exposed copper on the wire is unacceptable.

5.2 Wire shavings on assembled beads are unacceptable.

6.0 Pullout:

6.1 Pullout on Surface A or Surface D which does not interfere with the holes in the part is acceptable.

7.0 Revision History:

Revision Number	Reason for Change	Revision Date